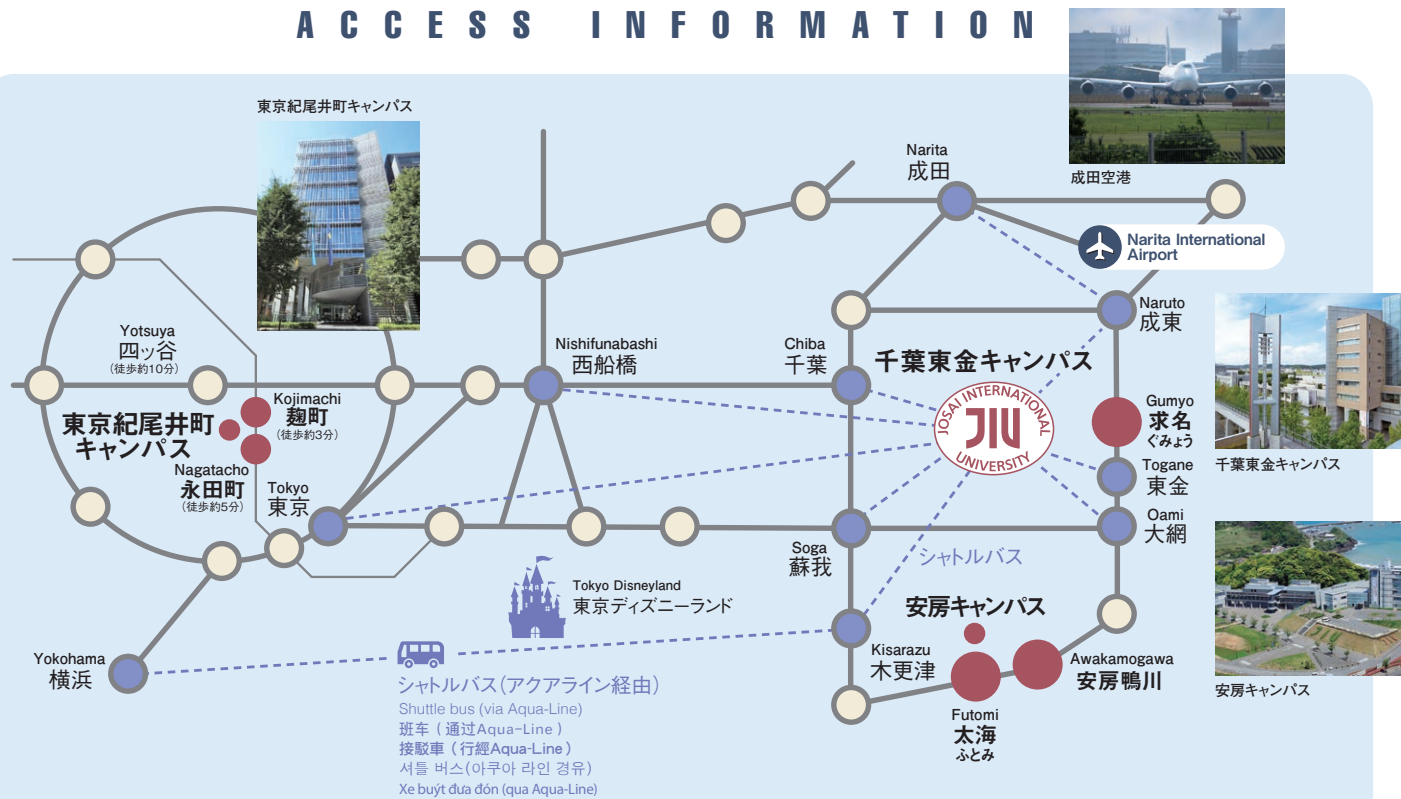


ACCESS INFORMATION



JIUキャンパスへのアクセス

- JR外房線大網駅またはJR総武本線成東駅乗り換え、JR東金線求名(くみょう)駅下車徒歩5分
- 千葉東金有料道路[東金インターチェンジ]より車で20分
- JR東京駅、JR横浜駅(アクアライン、JR木更津駅経由)、JR西船橋駅、JR大網駅、JR蘇我駅および京成成田駅(JR成東駅経由)よりシャトルバス運行

Access to JIU Campus

- Change at Oami Station on the JR Sobu Line, or Naruto Station on the JR Sobu Main Line, to the JR Togane Line, and get off at Gumyo. Approx. JIU is approx. 5 min. from Gumyo Station to JIU on foot.
- Approx. 20 min. by car from the Togane Interchange of the Chiba-Togane Toll Road.
- Shuttle buses are available from each station listed below: JR Tokyo, JR Yokohama (via Aqua-Line), via JR Kisarazu, Station, JR Nishifunabashi, JR Oami, JR Soga, and Keisei Narita stations. (via JR Naruto Station).

前往JIU校区的交通指南

- 在JR外房线大网站或者JR总武本线成东站换乘JR东金线，于“求名”站下车步行约5分钟。
- 出千叶东金收费高速公路“东金出入口”后开车约20分钟。
- 在JR东京站、JR横浜站（途径东京湾跨海公路、JR木更津站）、JR西船桥站、JR大网站、JR苏我站、京成成田站（途径JR成东站）有校车接送。

前往JIU校区的交通指南

- 在JR外房線大網站或者JR總武本線成東站轉乘JR東金線，在求名站下車步行約5分鐘。
- 千葉東金收費高速公路「東金交流道」開車約20分鐘。
- 在JR東京站、JR橫濱站(東京灣跨海公路、行經JR木更津站)、JR西船橋站、JR大網站、JR蘇我站、JR成東站及京成成田站(行經JR成東站)有校車接送。

JIU캠퍼스 교통안내

- JR소토보센(外房線) 오오아미(大網)역 또는 JR소부혼센(總武本線) 나루토(成東)역에서 JR도가네센(東金線)으로 갈아타서 구묘(求名)역에서 내립니다. 구묘(求名)역 하차 도보 5분
- 지바토가네(千葉東金) 유료도로 “도가네(東金)IC”에서 자동차로 20분
- JR도쿄역, JR오코하마역(아쿠아라인, JR기사라즈(木更津)역 경유), JR니시후나바시(西船橋)역, JR오오아미(大網)역, JR소가(蘇我)역 및 게이세이나리타(京成成田)역(JR나루토(成東)역 경유)에서 셔틀버스 운행

Kết nối giao thông đến trường đại học quốc tế Josai

- Đi bằng tuyến tàu điện Sotobosen của hãng tàu JR từ nhà ga Oami, hoặc đi bằng tuyến tàu sobuhonsen-đổi tàu ở nhà ga Naruto, hoặc đi bằng tuyến tàu Toganesen, đến nhà ga Gumyo và đi bộ 5 phút.
- Đi bằng đường có thu phí Togane của tỉnh Chiba, đến nút giao thông có tên là Togane interchange, rẽ xuống đi tiếp và mất khoảng 20 phút.
- Đi bằng tàu điện của hãng tàu JR từ nhà ga Tokyo, hoặc đi bằng tàu tốc hành từ nhà ga Yokohama-chạy xuyên qua nhà ga Kisarazu, hoặc đi bằng tàu điện xuất phát từ các nhà ga: Nishifunabashi eki, Oami eki, Soga eki, và đi bằng tuyến xe bus xuất phát từ nhà ga Keiseinarita (Xuyên qua nhà ga Naruto)

城西国際大学

〒283-8555 千葉県東金市求名1番地
城西国際大学 留学生別科
TEL.0475-55-8859 海外から +81-475-55-8859
FAX.0475-53-2207 海外から +81-475-53-2207



<https://www.jiu.ac.jp/bekka/>

出願方法は留学生別科のホームページをご覧ください。

- To apply, please go to the Japanese Studies Program's homepage at <https://www.jiu.ac.jp/bekka/>
- 報名方法 請參看留學生別科的網頁。
- 申請方法 請看學校留學生別科首頁。
- 원서 제출 방법은 유학생별과 홈페이지를 참조해 주십시오.
- Phương pháp nộp hồ sơ dự tuyển: Tìm hiểu thông qua trang web của khoa.

城西国際大学

JOSAI INTERNATIONAL UNIVERSITY

留学生別科

Japanese Studies Program for International Students

P07-P10

JOSAI INTERNATIONAL UNIVERSITY
Japanese Studies Program for International Students

P11-P14

城西国際大学
留学生別科

P15-P18

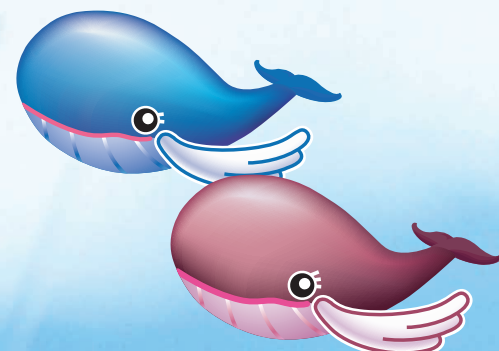
城西國際大學
留學生別科

P19-P22

조사이국제대학
유학생별과

P23-P26

Trường Đại Học Quốc Tế Josai
Khoa du học sinh nước ngoài





城西国際大学 学長

杉林 堅次

Sugibayashi Kenji

JIU留学生別科は、日本語や日本文化、日本社会について勉強し、大学の学部や大学院への進学準備をする1年間のコースです。

留学生別科生は、7学部、6研究科を有する城西国際大学の施設・設備を自由に利用でき、日本人の学部生・大学院生との交流機会も豊富です。海外姉妹大学の交換留学生やサマースクール留学生など、世界各地からの留学生もキャンパスで学んでおり、学外研修や学内行事を通して交流を深めています。

JIUの建学精神は、「学問による人間形成」です。そして「国際社会で生きる人間としての人格形成」を本学の教育の目標としています。JIU留学生別科では、国際社会で活躍できるグローバル人材の育成に、常に積極的かつ真剣に取り組んでいます。

President of Josai International University Kenji Sugibayashi

The Japanese Studies Program for International Students of Josai International University offers a one-year course in Japanese language, culture, and society for foreign students who wish to advance to undergraduate and postgraduate programs.

Students of the Japanese Studies Program are eligible to use the full range of facilities available at Josai International University. The university comprises 7 faculties and 6 postgraduate schools. Students also have abundant opportunities to build lasting friendships with Japanese students on campus and the many other international students from sister universities who are studying at our university as exchange students and summer school students deepen exchanges through off-campus workshops or events on campus.

Our university's motto is "Character building through learning," and our aim is to educate students in order to help them develop the skills needed to play an active role in the international community. The Japanese Studies Program always endeavors to accomplish this aim.

城西国際大学学長 杉林堅次

JIU留学生別科は学習日本語、日本文化、日本社会相关知识、为准备升入大学或研究生而设置的一年制课程。

留学生別科の学生可以自由使用城西国際大学所设7个本科院校、6个研究生院的基础设施和设备，同日本大学生、研究生的交流机会也很多。从海外姐妹校来的交换留学生和夏令营活动来的学生等，世界各地来的留学生都在同一校区学习，别科生可以通过校外的研修和校内交流活动来增进交流。

JIUの建校宗旨是“以学树人”。“塑造人品以立足国际社会”是本校的教育目标。JIU留学生别科积极努力地培养留学生成为活跃于国际社会的国际型人才。

城西國際大學校長 杉林堅次

JIU留學生別科是一個在學習日文，日本文化與日本社會的同時，也為進入大學部或研究所而準備的一年制學程。

別科留學生可自由使用城西國際大學內包含7個學系，6個研究所的設施與設備，與日本人的大學生，研究生等進行交流的機會也相當豐富。此外，校園內也有來自海外姊妹校的交換留學生以及暑期遊學的留學生等世界各地的學生，透過校外研習與校內活動相互增進交流。

JIU的辦學精神為「以學樹人」。此外，本校的教育目標為「適應國際社會之人才的品格教育」。JIU留學生別科不斷以積極並認真的態度，努力培育活躍於國際社會的全球化人才。

조사이국제대학 학장 스키바야시 겐지

JIU유학생별과는 일본어와 일본 문화, 일본 사회에 대해에 대해 배우며 대학 학부나 대학원 진학을 준비하는 1년 코스입니다.

유학생별과생은 7개 학부와 6개의 연구과가 있는 대학의 시설과 설비를 자유롭게 이용할 수 있으며, 일본인 학부생 및 대학원생과 교류할 수 있는 기회도 풍부합니다. 해외 자매대학에서 온 교환 유학생과 서머스쿨에 참가한 유학생 등, 세계 각지에서 온 외국인 유학생도 같은 캠퍼스에서 수강하며 학외 연수와 학내 행사를 통해 교류를 다지고 있습니다.

JIU의 건학이념은 "배움을 통한 인간 형성"입니다. 그리고 "국제 사회에서 살아가는 사람의 인격 형성"입니다. JIU유학생별과에서는 국제 사회에서 활약할 수 있는 글로벌 인재육성을 위해 적극적이고 진지한 자세로 임하고 있습니다.

Hiệu trưởng trường đại học quốc tế Josai Sugibayashi Kenji

Khoa du học sinh nước ngoài - Trường Đại Học Quốc Tế Josai là nơi học tập các chuyên ngành nhật ngữ, văn hóa nhật bản, và xã hội nhật bản học trong thời gian 1 năm, khoa cũng chính là nơi chuẩn bị kiến thức cần thiết để dự tuyển vào hệ đại học và hệ cao học.

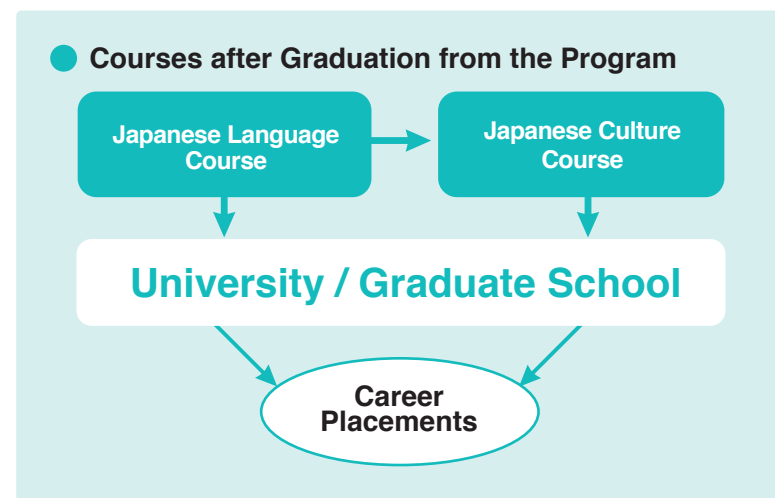
Du học sinh của khoa có thể sử dụng trang thiết bị, cơ sở vật chất hiện có của 7 khoa hệ đại học và 6 chuyên khoa hệ cao học khác trong trường, đồng thời cũng có nhiều cơ hội giao lưu với sinh viên người bản xứ ở hệ đại học và cao học cùng trường. Hơn thế, du học sinh giao lưu đến từ các trường kết nghĩa, và du học sinh tham gia khóa hè cũng đang học tập tại khoa, thông qua các hoạt động nghiên cứu, các lễ hội ... trong và ngoài trường, giúp cho sinh viên có thể giao lưu với nhau ngày một tốt hơn.

Tinh thần kiến học của Trường Đại Học Quốc Tế Josai là giáo dục làm người thông qua học vấn. Đồng thời, mục tiêu về giáo dục và học vấn của trường là "Giáo dục nhân cách làm người trong xã hội toàn cầu". Khoa du học sinh nước ngoài của trường đã và đang tích cực đào tạo nhân tài có thể làm việc tại môi trường xã hội mang tính toàn cầu.

Japanese Studies Program for International Students

The Japanese Studies Program of Josai International University offers high quality education in Japanese language and culture. The core curriculum is a one-year intensive course for foreign students who wish to advance to university or graduate school, as well as for those who intend to master the Japanese language on a short stay. We improve the students' general Japanese language proficiency based on the educational concept of "ease of understanding" and "very precise instructions." In order to better prepare those students who wish to enter a Japanese university or graduate school, we also offer special preparatory test preparation courses for the Japanese Language Proficiency Test (JLPT) and for the Japanese as a Foreign Language section of the Examination for Japanese University Admission for International Students (EJU), as well as a basic thesis-writing course.

Many international students from all over the world study together with Japanese students on the university campus. In such an international educational environment, students can foster their global perspective through communication with students from various cultural backgrounds. This program also aims to improve students' attributes and qualifications by helping them develop the skills needed to play an active role in the international community.



Message from the Director

Director, Japanese Studies Program for International Students

Since the Japanese Studies Program of Josai International University (JIU) was founded in 1998, it has sent many international students to the faculties and graduate schools of JIU. The program shares the same fundamental educational spirit of JIU, namely "character-building through learning." One can grow significantly through study and can lead a rich and fulfilling life. We hope that students from Japan or abroad who enter this program will learn a great deal here and that they will be able to work actively, both in Japan and globally, in the future.

We understand that living in a different culture can be difficult for international students, so in order to reduce any difficulties and worries whenever possible, constant support is provided that allows the students to concentrate on their studies. We also place each student in classes according to their individual Japanese level, allowing each student to easily attain step-by-step improvement in their Japanese skills, whatever their entry level. Moreover, we provide all students with opportunities to interact with Japanese students and local people so they may acquire practical communication skills in Japanese.

If you are thinking of studying at a university or graduate school in Japan, or if you intend to acquire higher Japanese language proficiency, the Japanese Studies Program should be your first port of call.

Japanese Language Course

This course is designed to give foreign students the Japanese language skills necessary to handle academic work at the university level. The classes are conducted in Japanese that should be understandable for students whose Japanese level is equal to or higher than JLPT N5 or the equivalent level at the time of entrance into the program. Every student can study Japanese in classes appropriate to his/her their Japanese level and can steadily improve their Japanese skills.

Japanese Culture Course

This course aims to provide foreign students with advanced Japanese skills and to improve their understanding of Japanese culture so that they can carry out their studies at a Japanese university faculty or graduate school in an effective manner. The classes are conducted in Japanese for students whose Japanese level is equal to or higher than JLPT N3 at the time of entrance into the course. Students who graduate from the Japanese Language Course (one year) can apply for this course.

Classes and required credits

	Japanese Language Course	Japanese Culture Course
Required Credits for Completion	Requires 37 credits	Requires 33 credits
Japanese Language	Beginning Japanese a-d (characters, vocabulary, grammar) Beginning Japanese e, f (acceptance, production) Elementary Japanese a-d (characters, vocabulary, grammar) Elementary Japanese e, f (acceptance, production) Pre-intermediate Japanese a-c (characters, vocabulary, grammar, acceptance) Pre-intermediate Japanese d (production) Pre-intermediate Japanese e (linguistic knowledge) Pre-intermediate Japanese f (listening comprehension) Pre-intermediate Japanese g (reading comprehension) Intermediate Japanese a-c (characters, vocabulary, grammar, acceptance) Intermediate Japanese d (oral production) Intermediate Japanese e (written production) Intermediate Japanese f (linguistic knowledge) Intermediate Japanese g (listening comprehension) Intermediate Japanese h (reading comprehension)	Pre-advanced Japanese a (general) Pre-advanced Japanese b (acceptance) Pre-advanced Japanese c (oral production) Pre-advanced Japanese d (written production) Pre-advanced Japanese e (linguistic knowledge) Pre-advanced Japanese f (listening comprehension) Pre-advanced Japanese g (reading comprehension) Advanced Japanese a (general) Advanced Japanese b (Japanese in video productions) Advanced Japanese c (read modern Japanese writing) Advanced Japanese d (oral presentation) Advanced Japanese e (paper writing) Business Japanese I, II Japanese Project Learning a, b
Japanese Culture	Japanese Culture - Seminar IA, IB Japanese Culture - Field Trip IA, IB	Japanese Culture - Seminar IIA, IIB Japanese Culture - Field Trip IIA, IIB Geography and History of Japan Japanese Society Politics and Economics in Japan
Seminar	Basic seminar I	Basic seminar II
Common Courses	Japan and the Contemporary World / English Communication	

Student's Voice



HOANG THI BICH NGOC

[Advanced to Graduate School of Management and Information Sciences]

After graduating from university in Vietnam, I came to Japan for my graduate studies. I have been enrolled in the Japanese Studies Program for one and a half years before I was admitted to the Graduate School of Management and Information Science. While I was studying at the Japanese Studies Program, I have learned Japanese language and culture. Visiting especially enjoyed visiting Japan's point of interest places. At the Graduate School of interest with other international students was one of my good experiences. Management and Informatics Sciences, I choose the subject that interests me and conduct research. I plan to go back to Vietnam and work for a Japanese bank there after I graduate.



吳 丁毅 (WU DINGYI)

[Advanced to Faculty of Media Studies]

I have entered the Department of Media Studies after studying at the Japanese Studies Program for half a year. I have obtained the JLPT N1 Certificate during when I was in the Program. The program was interesting and pleasant such as with excursion trips and parties that helped my growth. As the happy memories of the Japanese Studies Program are always in my heart. Because I plan to pursue graduate studies, I study very hard now.



HASAN MD KAMRUL

[Advanced to Faculty of Management and Information Sciences]

I am from Dhaka in Bangladesh. After I studied Japanese in the Japanese Studies Program for one year, I have entered the Department/Faculty of Management and Information Sciences. I had participated in many activities of the Japanese Studies Program which have enriched my experience in Japan. One of the memorable events was, I had many valuable experiences, such as taking part in the Japanese Speech Contest. The studies on modern management will help me to play a role in the global business in the future.



TRAN TRUNG KHUONG

[Advanced to Graduate School of International Administration]

I studied at the Japanese Studies Program of Josai International University for one year. The teachers of the Program taught me many important things for continuing my studies at the Graduate School of International Administration. Studying in Japan gave me many challenges and new experiences. As an international student, I will do my best in my studies and research and would like to deepen interactions with Japanese people and people from other countries.

Study Environment and Support

Support for Students who advance to JIU's undergraduate or graduate programs

- Students in the Japanese Studies Program can attend JIU's information sessions on advancement and open campus as well as get thorough guidance on advancement by advisors.
- Students can receive a recommendation from the Program Director for admission to the undergraduate or graduate programs.
- Students can receive a reduction or exemption to the admission and tuition fees upon advancing to the undergraduate programs.
- Students in the Program who are recognized for excellence in studying and possessing good character can be awarded access to auditing classes of undergraduate and/or graduate courses. (Specific criteria apply.)

Use of JIU's Educational Facilities

Students in the Japanese Studies Program can freely use the library, museum, information equipment and facilities, all sports facilities, and cafeterias, and other JIU campus amenities.

Adviser System

A full-time instructor acts as an advisor to each international student to provide advice on life in Japan and advancement to the undergraduate or graduate programs.

Class Coordinator System

Classes are divided based on the level of Japanese-language proficiency so that students can effectively improve their language proficiency. Class Coordinators take care of each class to understand each student's learning situation and give guidance.

Support for Learning Japanese

Learning support from teachers during office hours, a mentor system by Japanese students who are studying Japanese language teaching methods, and learning support in class from volunteers help students improve their Japanese proficiency.

Support from the Japanese Studies Program Office

Administrative staff provide each student with various kinds of support necessary for living in Japan, such as various procedures after entering Japan and finding accommodations, so that students can concentrate on their studies without worry.

Opportunities to Participate in Activities and Events

Students can enrich their study abroad life in Japan by participating in and experiencing various activities and events, such as club activities, including tea ceremony and tennis, the JIU Festival, local events, including site tours and marathons, and international exchange activities with groups from overseas.

Interaction with the Locals

Students can build relationships with the local communities and deepen their understanding of Japanese culture and society through such events as the Japanese speech contests and international exchange parties organized by local international exchange associations as well as class visits by the locals.

Assistance in Finding Accommodation

Administrative staff members provide students with support for finding accommodation in cooperation with local realtors and owners.

Campus Life

The office and classrooms of the Japanese Studies Program are located on the JIU campus so that students in this program can have an enjoyable university life with undergraduate and graduate students. Therefore, even after advancing to the university, students can devote themselves to study and club activities without worry.

Campus Life



Welcome party for new students



Japanese Culture Class

Undergraduate Faculties and Graduate Schools at Josai International University for International Students

Undergraduate Faculties

Faculty of Management and Information Sciences

Department of Management Science

The goal of this department is to educate students to be able to play an important role in the fields of sales, planning, distribution, logistics, and international business as well as in a company. Students can select from four courses: Global Business Marketing, Public Management, Sports Management, and Information Management.

Faculty of International Humanities

Department of Inter-Cultural Studies

Students are trained to develop cosmopolitan perspectives and to be able to think from an inter-cultural point of view.

Department of International Exchange Studies

Students receive the practical knowledge and training required for modern international exchange activities as well as the communication language skills necessary to help them resolve any problems they may encounter.

Faculty of Media Studies

Department of Media and Communications

The collaborative learning programs of the three fields—Media Arts, Media Technology, and Media Design—will develop students' new creativity and production ability.

Faculty of Tourism (Awa Campus)

Department of Tourism

This department provides a wide range of courses in the foreign languages, hospitality, travel agent business, and licensing related classes. Students study the local culture and nature as well as mental and physical health related issues that are required in the tourism industry of the 21st century.

Faculty of Social Work Studies

Department of Social Work Studies

This department offers three courses in childcare, care work, and social work to develop welfare specialists with professional knowledge and skills.

JIU also has programs of study at the Faculty of Nursing, the Faculty of Pharmaceutical Sciences, and the Department of Physical Therapy at the Faculty of Social Work Studies.

Graduate School

Graduate School of Humanities

MA Program in Inter-Cultural Studies

This program aims to cultivate researchers and professionals who possess a wide range of advanced, systematic knowledge and practical abilities with flexibility that are acceptable in the international community.

MA Program in Women's Studies

The aim of this program is to cultivate professionals active in the international community who have a wide, global, and interdisciplinary perspective, as well as human resources who participate in activities on global cooperation and gender equality.

MA Program in Global Communication Studies

This program provides three courses in Japanese Language Education, Interpretation/Translation (Japanese - English, Japanese - Chinese, Japanese - Korean), and TESOL to cultivate language specialists.

PhD Program in Comparative Culture

This program provides courses focusing on three fields of study: Welfare for the aged and the disabled, Insurance and Medical Welfare, and Welfare for Child and Family. Students will be trained to become specialists who are knowledgeable, in command, and able to contribute positively to welfare needs and resolve welfare related issues.

Graduate School of Management and Information Sciences

Ph.D Program and M.B.A. Program in Management of Entrepreneurial Ventures

PhD Program and MBA Program in Management of Entrepreneurial Ventures The objective of this program is to develop human resources who have the ability to develop business with highly systematized strategies and information and to judge from both global and local perspectives.

Graduate School of Social Work Studies

MA Program in Social Welfare

This program provides courses focusing on three fields of study: Welfare for the aged and the disabled, Insurance and Medical Welfare, and Welfare for Child and Family. Students will be trained to become specialists who are knowledgeable, in command, and able to contribute positively to welfare needs and resolve welfare related issues.

Graduate School of Business Design

MBA Program in Business Design

This program focuses on three fields of business design study, providing courses in Business Communication Design, Business Model Design, and Media Content Design. This program is an evening business school for obtaining an MBA degree.

Graduate School of International Administration

MA Program in International Administration

This program focuses on four areas of study: Policy Studies, International Relations, Global Business Studies, and Tourism Studies. Students will attain the specialized knowledge and skills required for future careers working in global environments. We also provide courses for students who want to obtain a master's degree in English.

JIU also has Graduate School of Pharmaceutical Sciences.

Campus Life



Campus Calendar

4	5	6	7	8	9	10	11	12	1	2	3
<ul style="list-style-type: none"> オリエンテーションウィークス 入学式 留学生歓迎会 	<ul style="list-style-type: none"> 別科懇談会 	<ul style="list-style-type: none"> 日本文化研修 日本留學試験 	<ul style="list-style-type: none"> 期末試験 日本語能力試験 	<ul style="list-style-type: none"> 夏期休業 卒業式 	<ul style="list-style-type: none"> オリエンテーションウィークス 入学式 留学生歓迎会 	<ul style="list-style-type: none"> 別科懇談会 	<ul style="list-style-type: none"> 大学祭 日本留學試験 	<ul style="list-style-type: none"> 日本文化研修 日本語能力試験 	<ul style="list-style-type: none"> 冬期休業 (年末年始) 	<ul style="list-style-type: none"> 期末試験 	<ul style="list-style-type: none"> 卒業式 春期休業
<ul style="list-style-type: none"> Campus Life Orientation Entrance Ceremony Welcome party 	<ul style="list-style-type: none"> Teacher- Student Party 	<ul style="list-style-type: none"> Japanese culture Excursion Examination for International Students in Japan 	<ul style="list-style-type: none"> Final Exams Japanese Language Proficiency Test 	<ul style="list-style-type: none"> Summer Vacation Graduation ceremony 	<ul style="list-style-type: none"> Campus Life Orientation Graduation ceremony Welcome Party 	<ul style="list-style-type: none"> Teacher- Student Party 	<ul style="list-style-type: none"> JIU Festival Examination for International Students in Japan 	<ul style="list-style-type: none"> Japanese culture Excursion Japanese Language Proficiency Test 	<ul style="list-style-type: none"> Winter Vacation (New Year holidays) 	<ul style="list-style-type: none"> Final Exams 	<ul style="list-style-type: none"> Graduation Ceremony Spring Vacation
<ul style="list-style-type: none"> 新生教育週 開學典禮 留學生迎新會 	<ul style="list-style-type: none"> 別科談心會 	<ul style="list-style-type: none"> 日本文化研修 日本留學考試 	<ul style="list-style-type: none"> 期末考試 日語能力考試 	<ul style="list-style-type: none"> 暑假 畢業典禮 	<ul style="list-style-type: none"> 新生教育週 開學典禮 留學生迎新會 	<ul style="list-style-type: none"> 別科談心會 	<ul style="list-style-type: none"> 校園慶典 日本留學考試 	<ul style="list-style-type: none"> 日本文化研修 日語能力考試 	<ul style="list-style-type: none"> 寒假 (年末年初) 	<ul style="list-style-type: none"> 期末考試 	<ul style="list-style-type: none"> 畢業典禮 春假
<ul style="list-style-type: none"> 新生教育週 開學典禮 留學生歡迎會 	<ul style="list-style-type: none"> 別科談心會 	<ul style="list-style-type: none"> 日本文化研修 日本留學試驗 	<ul style="list-style-type: none"> 期末考試 日本語能力試驗 	<ul style="list-style-type: none"> 暑假 畢業典禮 	<ul style="list-style-type: none"> 新生教育週 開學典禮 留學生歡迎會 	<ul style="list-style-type: none"> 別科談心會 	<ul style="list-style-type: none"> 校園慶典 日本留學試驗 	<ul style="list-style-type: none"> 日本文化研修 日本語能力試驗 	<ul style="list-style-type: none"> 寒假 (年底年初) 	<ul style="list-style-type: none"> 期末考試 	<ul style="list-style-type: none"> 畢業典禮 春假
<ul style="list-style-type: none"> 오리엔테이션 위크 입학식 유학생 환영회 	<ul style="list-style-type: none"> 별과간담회 	<ul style="list-style-type: none"> 일본문화연수 일본유학시험 	<ul style="list-style-type: none"> 기말시험 일본어능력시험 	<ul style="list-style-type: none"> 여름방학 졸업식 	<ul style="list-style-type: none"> 오리엔테이션 위크 입학식 유학생 환영회 	<ul style="list-style-type: none"> 별과간담회 	<ul style="list-style-type: none"> 대학축제 일본유학시험 	<ul style="list-style-type: none"> 일본문화연수 일본어능력시험 	<ul style="list-style-type: none"> 겨울방학 (연말연시) 	<ul style="list-style-type: none"> 기말시험 	<ul style="list-style-type: none"> 졸업식 봄 방학
<ul style="list-style-type: none"> Tuần lễ định hướng Lễ nhập học Tiệc chào đón du học sinh mới vào 	<ul style="list-style-type: none"> Họp thân mật khoa nhật ngữ 	<ul style="list-style-type: none"> Trải nghiệm văn hóa Nhật Bản Kỳ thi Du Học Nhật Bản 	<ul style="list-style-type: none"> Thi cuối kỳ Kỳ thi năng lực nhật ngữ 	<ul style="list-style-type: none"> Nghỉ hè Lễ tốt nghiệp kỳ tháng 9 	<ul style="list-style-type: none"> Tuần lễ định hướng Lễ nhập học Tiệc chào đón du học sinh mới vào 	<ul style="list-style-type: none"> Họp thân mật khoa nhật ngữ 	<ul style="list-style-type: none"> Lễ hội văn hóa của trường Kỳ thi Du Học Nhật Bản 	<ul style="list-style-type: none"> Trải nghiệm văn hóa Nhật Bản Kỳ thi năng lực nhật ngữ 	<ul style="list-style-type: none"> Kỳ nghỉ đông (Ngày lễ tết) 	<ul style="list-style-type: none"> Thi kiểm tra cuối kỳ 	<ul style="list-style-type: none"> Lễ tốt nghiệp Kỳ nghỉ xuân